

NEWHAM COMMUNITY LEARNING

Structure Diagram - August 2022

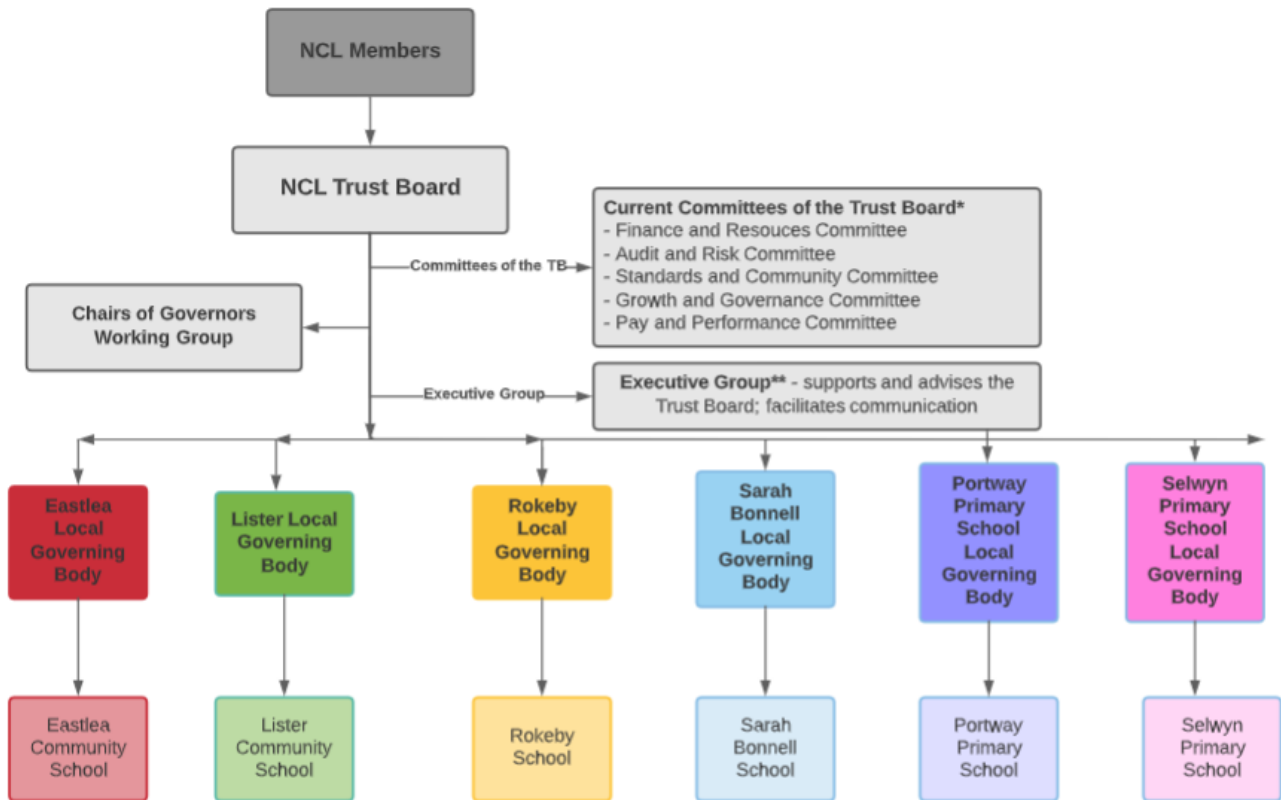


newhamcommunitylearning.org

Tel: 0203 102 4002 | Email: ceo.pa@newhamcommunitylearning.org | [@NCLTrust](https://twitter.com/NCLTrust)
Newham Community Learning, Pretoria Road, London E16

Newham Community Learning is a charitable company limited by guarantee and registered in England and Wales.
Company Number 09896221. Registered office: Newham Community Learning, Pretoria Road, London E16.

NEWHAM COMMUNITY LEARNING - TRUST GOVERNANCE STRUCTURE



*The Trust Board may establish any other committee: the constitution, membership and proceedings of which shall be determined by the Trustees. All committees have a Terms of Reference provide further detail, and which form part of the Scheme of Delegation.

** The Executive Group provides a focus for the setting of policy and the development of the Trust's strategy. It is chaired by the CEO and includes all Headteachers (with LGB Chairs participating twice a year). The Terms of Reference provides further detail.

